

Are you  
ready?

Let's go sew!

Brought to you by Joanne Banko  
[www.letsdosew.com](http://www.letsdosew.com)



As seen on [It's Sew Easy PBS TV Series 1300](#)  
Show #1311

## Pattern Instructions for Fleece Ruana

**Actual definition of a Ruana:** Pronounced roo-ah-nuh, this is a poncho-like garment typically made from wool and worn in the mountains of Columbia.

**My definition:** This loose fitting wrap is somewhat of a cross between a cape and a poncho. Worn by anyone who loves the comfort of an added cozy layer. The version featured here is an easy on, easy off garment made from polar type fleece. It's an ideal extra layer over many garments and can even be worn over a coat. Especially nice for traveling, be forewarned! It may take you longer to get to your intended destination while wearing this wrap, due to the fact that people are going to stop you to pay compliments!!!

All Content Copyright ©2017 Joanne Banko

Opinions are the author's and do not necessarily represent any specific company or manufacturer, named or un-named.  
Information presented in good faith, deemed reliable but not guaranteed.

Are you  
ready?



Brought to you by Joanne Banko  
[www.letsgosew.com](http://www.letsgosew.com)

## Notes about the pattern, embroidery options, & fabric possibilities:

This is an original pattern designed as a variation of a couple wraps from my book titled [Wrapped in Embroidery](#), published by Designs in Machine Embroidery. You'll find a total of nine wraps and a collection of classic multi-format embroidery designs in the book and included CD ROM. On the show I demonstrated some techniques for creating continuous designs to embellish this fleece ruana with a variety of tools built into the machine. The book details three easy methods with both low tech and no tech options suitable for most any embroidery machine with 5" X 7" hoop capability. You'll also find a multitude of ideas and tips for embroidering wraps that look beautiful on both the right and wrong side.

My favorite fabric for this garment is genuine [Polartec](#) Classic 100 (Double Velour). This fabric is the perfect weight for this wrap and has just the right amount of drape. In addition, it looks beautiful even when it is left unfinished, like the blue version in the show. Feel free to experiment with other fabrics, as there are many more possibilities!

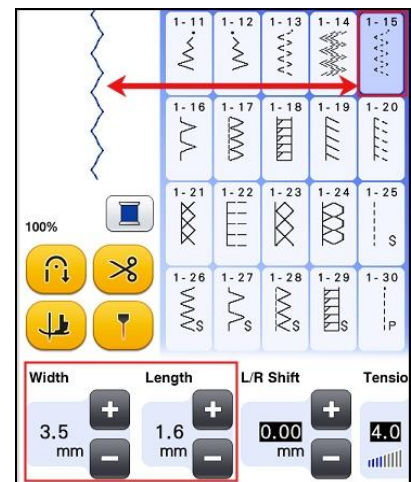
This is currently a very popular style in Ready-to-Wear. However, that was not the case when I began outlining projects for the book. Now I see versions of this style everywhere. I have always loved shawls, capes, and various wrap style garments. I'm thrilled to be able to share this garment with you so you can create your own stunning ruana!

## Supplies:

- Pattern tracing cloth with 1-inch grid. I used [Pellon Tru-Grid™](#)
- 24-36 inch long ruler such as those used by quilters
- Ordinary compass or another tool to draw a precise half circle
- Colored pencil for marking

## Steps to make Ruana pattern:

- Cut a piece of tracing cloth to equal 48-inches wide X 56-inches long. With tracing cloth measuring a maximum of 45-inches you will need to add a piece to get the proper size. Simply cut two appropriately sized pieces to achieve your measurement, overlap, and then sew them together using a triple zigzag stitch on the machine.



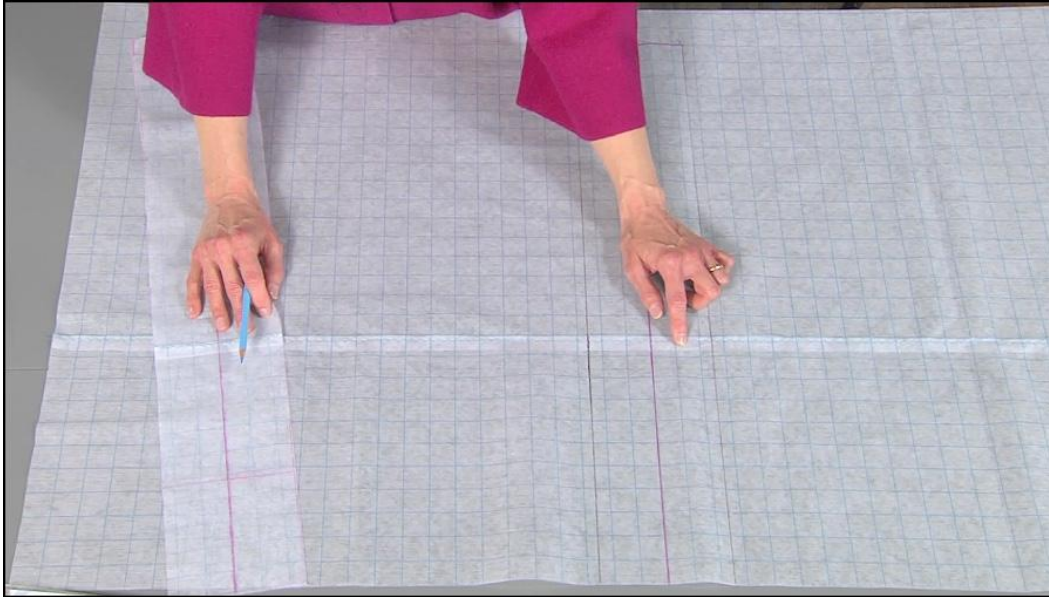
All Content Copyright ©2017 Joanne Banko

Opinions are the author's and do not necessarily represent any specific company or manufacturer, named or un-named.  
Information presented in good faith, deemed reliable but not guaranteed.

Are you  
ready?

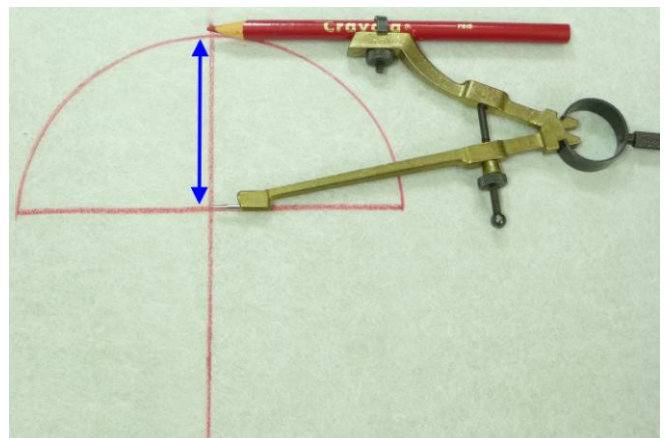
Let's go sew!

Brought to you by Joanne Banko  
[www.letsdosew.com](http://www.letsdosew.com)



- To form a "U" shaped cut out for the neck and front opening begin by drawing a line in the center of the gridded piece, starting at the bottom of the lengthwise edge and measuring up 27-inches. Draw a second line across the top of the long line, with this line centered and measuring 5-inches across. Next, draw two parallel lines to the right and left of the centerline, having these two parallel lines spaced 5-inches apart. Set the compass so the tip of the compass and the tip of the pencil are spaced 2 ½-inches apart. With the tip of the compass at the center point, draw a half circle. When you're finished drawing all the lines cut out the entire "U" shaped piece to form center front and neck opening for your fleece ruana. See illustration below:

**Arrows indicate 2 ½-inch spacing**



**All Content Copyright ©2017 Joanne Banko**

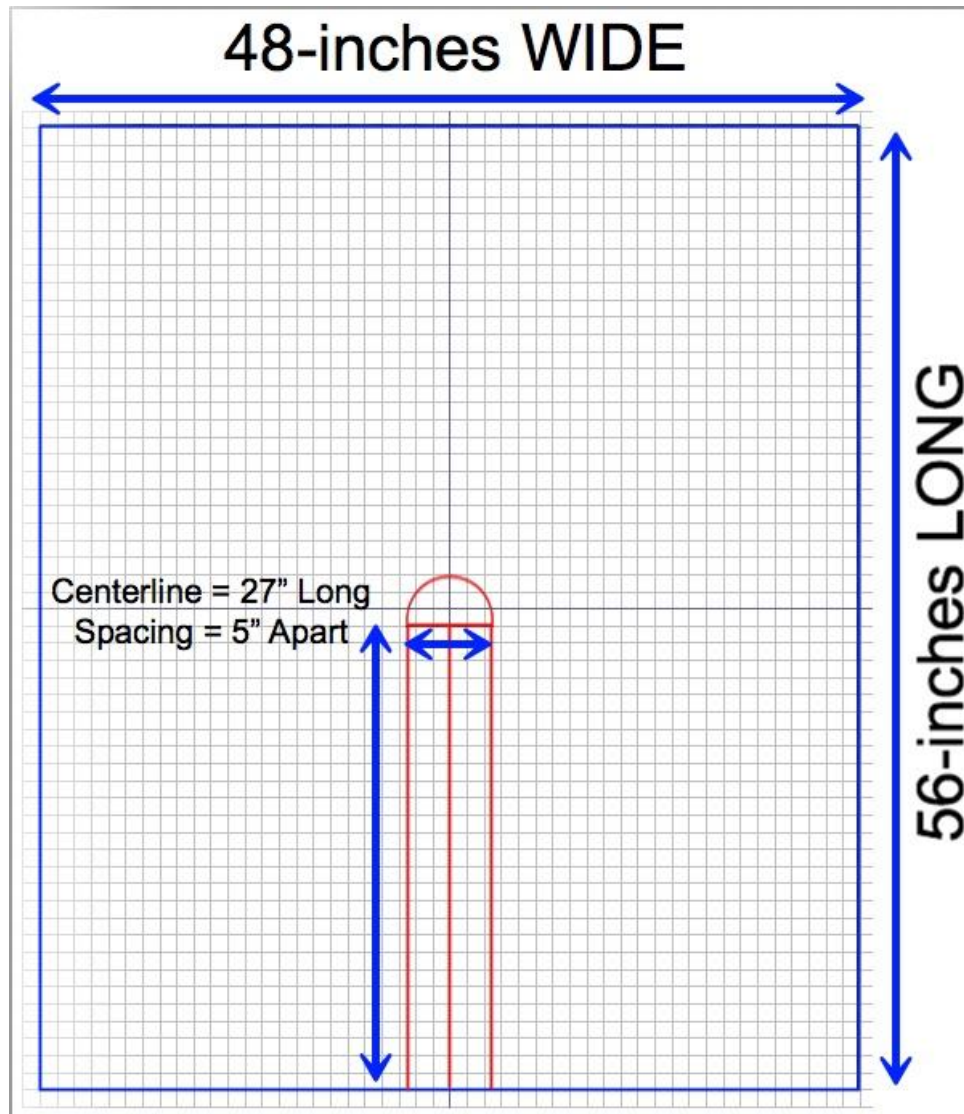
Opinions are the author's and do not necessarily represent any specific company or manufacturer, named or un-named.  
Information presented in good faith, deemed reliable but not guaranteed.



Are you  
ready?



Brought to you by Joanne Banko  
[www.letsgosew.com](http://www.letsgosew.com)



Use the pattern to cut your fleece, making sure the length of the pattern is parallel to the selvedge of the fleece. Embroider and finish as desired.

[CLICK HERE](#) to visit the Projects section of the It's Sew Easy TV website for additional Free instructions that coordinate with show #1311, titled "When the Wind blows."

All Content Copyright ©2017 Joanne Banko

Opinions are the author's and do not necessarily represent any specific company or manufacturer, named or un-named.  
Information presented in good faith, deemed reliable but not guaranteed.