

Are you  
ready?



Brought to you by Joanne Banko  
[www.letsgosew.com](http://www.letsgosew.com)

## **Project Tip Sheet for Sheer Fashion Wrap**



### **As seen on It's Sew Easy TV Series 700 Segment 708-2**

You can purchase a DVD for this episode and the entire 700 series from the [itseweasytv.com](http://itseweasytv.com) web site. Click the link below for more information: [It's Sew Easy DVD](#)

In this tip sheet you will find additional instructions for the Sheer Fashion Wrap I presented on segment 708-2. At the end of these instructions you will find more information about the It's Sew Easy TV instruction file I wrote to coordinate with this episode. You will want to watch the full episode to see more helpful sewing tips and techniques for creating this garment.

I love making and wearing wraps for every season! Here you see a couple wraps from my book titled [Wrapped in Embroidery](#). These wraps are designed for cool weather. My book shows how to draw patterns for the original wrap projects seen below. If you love scarves, shawls, and wraps I think you will enjoy the nine original projects I included in *Wrapped in Embroidery*. [CLICK HERE](#) for a preview.

**Folkloric Fringed Wrap**



**Chic Suede Wrap**



Now, how about a wrap for warm weather wear? Or a sheer wrap for dressy occasions? Would you believe my sheer wrap shown on TV is based on the same shape as the Folkloric Fringe wrap you see made up in orange wool? The style for this sheer fashion wrap is basically a large rectangle with a U shaped opening for the front. Here you will find basic instructions for the wrap, including a simple pattern you can draw. I hope you will have fun creating your own sheer and stunning wrap from polyester chiffon fabric.

Are you  
ready?



Brought to you by Joanne Banko  
[www.letsfusew.com](http://www.letsfusew.com)

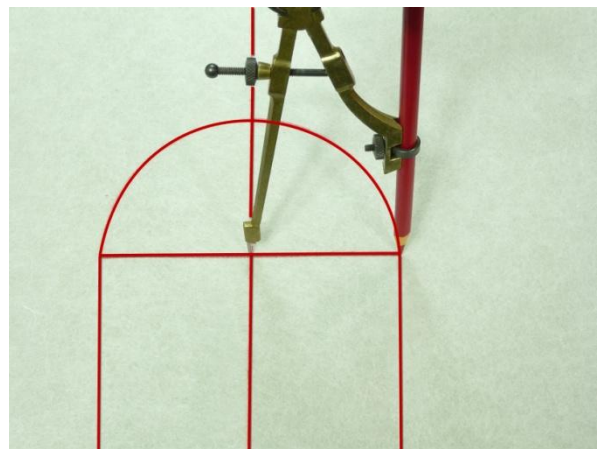
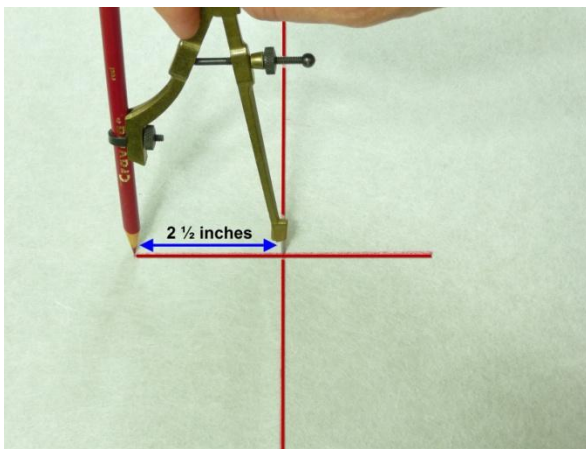
### Supply List for "one size fits most" Sheer Chiffon Wrap:

- Plain paper or pattern transfer cloth for creating pattern.
- A yardstick, 36-inch Quilt ruler, or a long T-square for measuring and marking pattern lines.
- Ordinary compass for creating the neckline curve.
- Basic Sewing Notions including fine glass head pins and a fine sharp sewing machine needle. I used a Schmetz Microtex size 10 needle. Purchase fine polyester or cotton sewing thread that closely matches your fabric. I used Coats Dual Duty XP® Fine.
- Fabric for wrap, purchase 1 & ¾ yards of 60-inch wide polyester chiffon.

### Steps for Drawing the Pattern:

*(See illustrations for steps 1 – 6 on page three)*

1. Begin by drawing a large rectangle measuring 50" wide X 57" long for the main wrap pattern.
2. Draw a line to mark the center of the rectangle along the entire length of the pattern.
3. To create the "U" shaped opening for the front of the wrap begin by measuring along the marked centerline and making a dash line 27-inches up from the lower edge. Extend the dash line to make a perpendicular line measuring 5-inches long. This line marks the shoulder location.
4. Next, draw two additional lines parallel to the centerline, having each line spaced 2 ½ inches from the center and ending at the shoulder location.
5. Use the compass to mark the final line, the cutting line for the back neckline curve. First, set the compass for a distance of 2½-inches from the compass point to the pencil tip. Beginning with the tip of the compass at the center of the marked shoulder line, draw a half circle from one end of the line to the other. This final line completes the U shaped portion needed for the front opening.

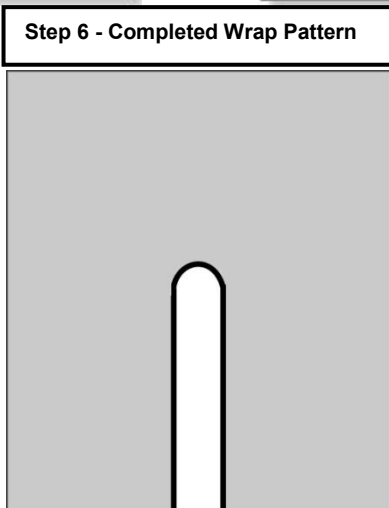
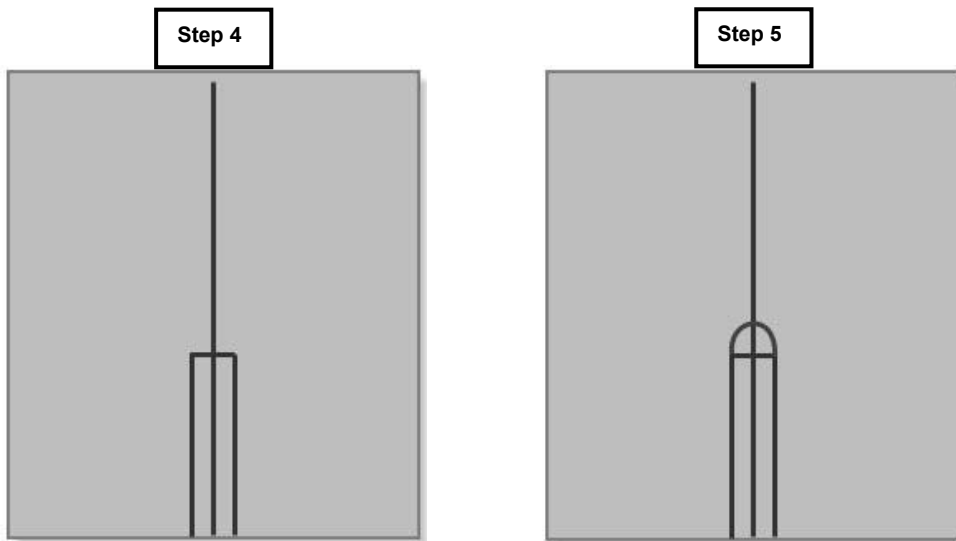
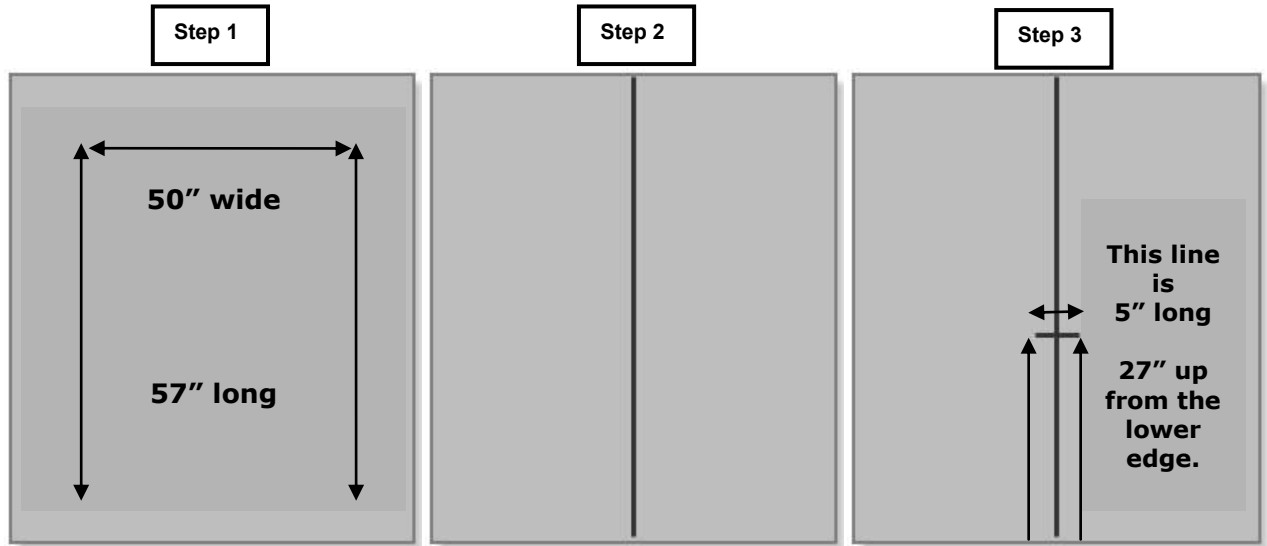


6. Cut along the lines drawn to create the "U" shape.

Are you ready?



Brought to you by Joanne Banko  
[www.letsgosew.com](http://www.letsgosew.com)



Are you  
ready?



Brought to you by Joanne Banko  
[www.letsdosew.com](http://www.letsdosew.com)

### Steps for Cutting and Sewing the Wrap:

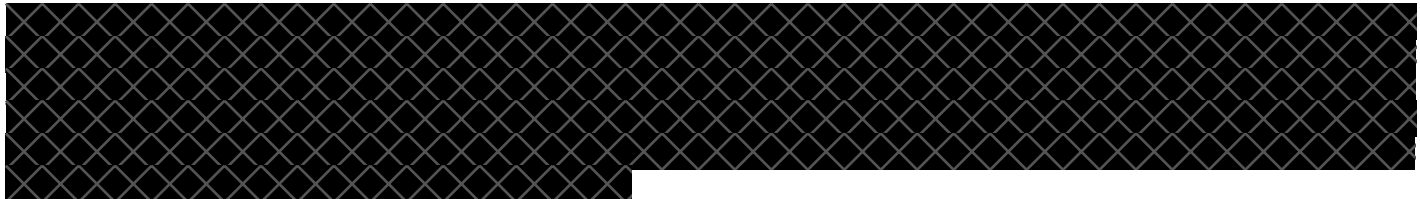
1. Use your completed pattern to cut the wrap from a single layer of chiffon, placing the length of the pattern on the lengthwise grain of the fabric. The centerline should be parallel to the fabric grain line. Be sure to follow the cutting tips shown on the TV episode.
2. Stay-stitch the neckline curve using a short straight stitch, stitching a scant 1/2-inch from the raw edge. Make 1/8-inch deep clips at regular, frequent intervals along the curve.
3. Hem all raw edges of the wrap following the guidelines outlined in the **It's Sew Easy TV Segment 708-2** download file. It is best to hem the "U" shaped neckline first, followed by the long side edges, and finishing with the front and back hemline.

**Note:** Shoulder seams have been eliminated in the instructions presented here.

**Optional Idea:** To make a double layer wrap, double the yardage requirements and cut two complete wrap pieces. Carefully pin right sides together. Using a 1/4-inch seam allowance sew along each edge, leaving an opening the size of your hand along one straight side. Click neck curves, turn right sides out and press carefully. Close opening with small hand stitches.

*I hope you enjoy making and wearing your beautiful new wrap!*

*If you have any questions or comments please feel free to contact me at [letsdosew.com](http://letsdosew.com)*



**Join Us!**

It's sew easy – the place for creative and contemporary sewing with instructions, videos, patterns and projects presented by leading sewing experts for beginners and experienced sewers. Featuring apparel, quilting and home dec.

**We're so glad you've decided to join the Its sew Easy site!**

**Members receive these great benefits:**

- Access to free projects.
- Inspiration to make your own creative designs.
- Instructions for making fabulous sewing projects.

First name

Last name

Email address (this will be your username)

Your email address is safe. We will not sell, rent or disclose your email address to third parties.

Password

Verify password

As a bonus for joining, look for updates and newsletters from our sponsors, our trusted partners in the Its sew Easy TV program.

If you **do not** want to receive these newsletters please check here:

**Note:** If you leave the password field blank the system will automatically assign one to you.

**Our Partners:**

- Brother International Corporation
- Craftsy
- Havel's Sewing Threads
- Vogue Fabrics, Inc.
- The Warm Company
- Coats & Clark
- Frym Consumer USA
- Horn of America, Inc.