

## It's Sew Easy Series 1500 - Be Your Own Sewing Super Hero!

Sewing Transformers    Show# 1509-1    Detachable Textured Collar



**Presented by: Joanne Banko**

[www.letsgosew.com](http://www.letsgosew.com)

***Let's stay in touch!*** I'd love to help you make the most of ***your*** sewing machine!

[CLICK HERE](#) to add your name to the letsgosew.com email list and receive timely tips, sewing news, free tutorials, and special updates. You'll be the first to know about new blog posts and my weekly preview of the online It's Sew Easy TV show.

*Learn how to take an ordinary jacket and transform it into a stylish, season spanning wardrobe staple with a detachable collar made from luxurious textured fabric. This is an easy update you can sew in no time at all. No need for a collar pattern, I'll show you how to draw your own. Are you ready? Let's go sew!*

### **Materials and basic supplies for lined, detachable collar:**

- Featured machine is the [Brother XV8550D Dream Machine2](#) with the included MuVit™ Digital Dual Feed System. Additional machine models are available for use with this foot. As an alternative you can use a closed toe walking foot for sewing the collar.
- Collar is made from [Luxe Cuddle® Rose](#) embossed fabric and lined with [Silky Satin Solid](#), both generously provided by [Shannon Fabrics](#). Yardage varies depending on your custom pattern. I suggest making the pattern and then using it to determine size of fabric pieces you need. Consider making a mock up in a less expensive fabric to test your collar. Most any medium to heavy weight fabric will do. **Notes about the collar fabric:** This embossed fabric is washable, making it ideal for a collar like this. Pay attention to care instructions which require very low to no heat when drying. In addition, it's not possible to press this fabric like you ordinarily would. Instead, simply use a bit of steam, hovering over fabric without touching it with the iron, manipulating the seam gently with your fingers.
- Coat with simple styling such as a blazer style with a narrow collar to cover.
- One large hook and eye for collar closure. *Optional*, new buttons to replace existing jacket buttons.
- Paper and pattern tracing cloth for creating pattern. Dress form for fine tuning collar pattern. As an alternative you can try the jacket on but it would be best to have a friend help with making the adjustments.
- Foam board or another pin-able surface.
- [Dritz](#) Styling Design ruler.
- Thread and basic sewing notions for sewing collar.

### **Instructions for creating collar:**

Mark center of collar on back of jacket.

Layer a large piece of paper on top of the board. Open up the jacket as flat as you can, placing it on foam surface, smoothing it and pinning it down to hold it in place temporarily. Mark center for back neck on paper and then roughly trace the curve of the neckline on one side, ending slightly below roll line of jacket.

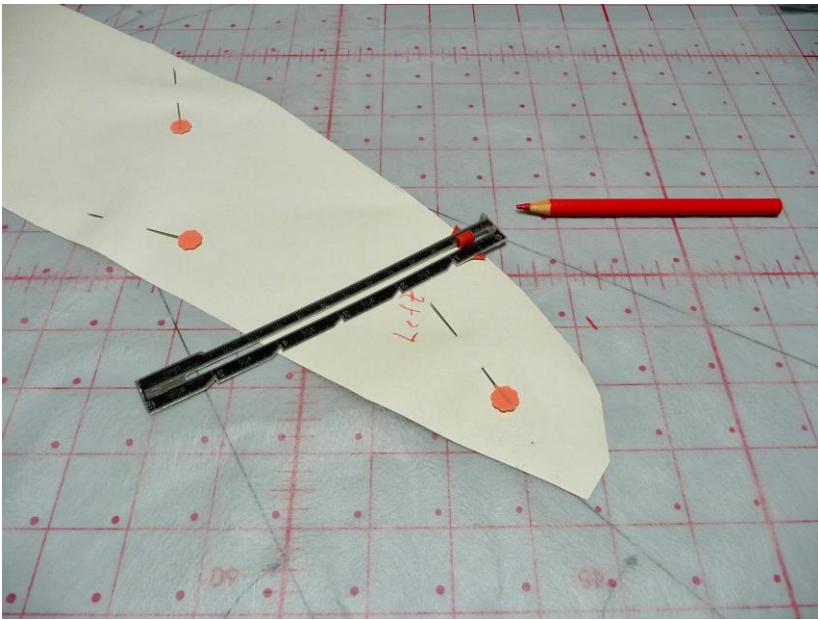


Remove jacket and draw a pattern for collar using fashion ruler to form lines. Size will vary. I made my collar to measure 6-inches wide at center back neck, tapering to about 3-inches near the bottom and then shaping to a gentle point at the tip. It's important to make sure that detachable collar is wide enough to completely cover existing collar. Fold paper in half at center back marking, and then cut one full collar pattern.

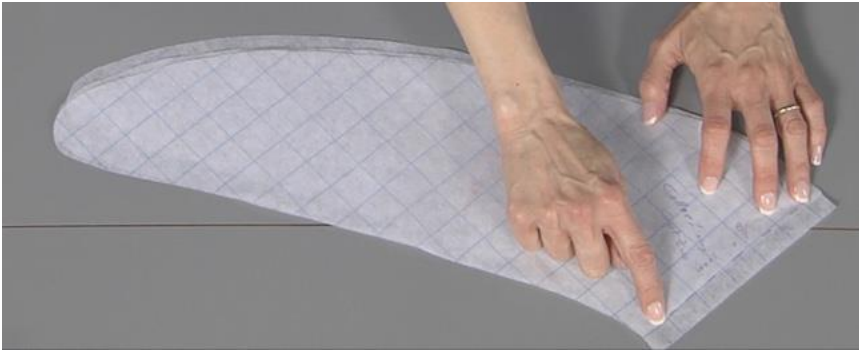
Place collar pattern back on dress form and fold out any excess at back neck in order to shape the collar, clipping and folding pattern as necessary. At this point you will see how close your collar is to matching the neck of the jacket and covering existing lapels. If it's not just right simply start the process over again until you are satisfied.



Refine your pattern, smoothing out any lines that are uneven, and using the curves on the ruler to draw smooth lines with a nice gradual shape.



When you're happy with the result you can trace off a final copy for cutting outer collar all in one piece, adding a 1/2-inch seam allowance on all edges. Next, fold final pattern in half to make a copy for lining, adding a 1/2-inch seam allowance at the center back neck. Note: I used paper for my preliminary patterns and then traced it off onto pattern tracing cloth for final copies.



Cut one full collar from embossed fabric. Cut two lining pieces using the lining pattern. Note that embossed fabric will shed. Shake off loose fuzz or place in a dryer on air setting (no heat) for a short period of time. Set up machine for sewing with MuVit™ foot or walking foot. Sew center back neck seam of lining, leaving a small opening for turning collar. Press this seam open. Place collar and lining right sides together and sew using the 1/2-inch seam allowance and a slightly longer stitch length. Trim curved seams, clipping as necessary. Turn collar right side out through opening. Finger press and then close opening with small hand stitches. Sew hook and eye on lining side to hold collar closed at the bottom. You are finished! Enjoy!



#### **Additional Resources:**

- I invite you to visit me at my Sewing and Embroidery website [www.letsdosew.com](http://www.letsdosew.com). You'll find online lessons, videos, free downloads, and lots of sewing and embroidery information and inspiration!
- Find me on Facebook at: [www.facebook.com/letsdosew/](https://www.facebook.com/letsdosew/)
- Be sure to visit the [Official Brother Blog](#) to read my posts on a wide variety of sewing and embroidery topics.

Happy Sewing!

