



It's Sew Easy Series 2100 – It really is SO Easy!
Show#2105-1 Scrap Happy Patchwork Placemat – Serger Style!

Presented by: Joanne Banko
www.letsgo sew.com



Let's stay in touch!
I'd love to help you make the most of your sewing machine!

[CLICK HERE](#) to add your name to the letsgo sew.com email list and receive timely tips, sewing news, free tutorials, and special updates. You'll be the first to know about new blog posts, live shows, and more!

Notes about the project: Finished placemat measures approximately 17" wide X 13" long. Supplies listed are for one placemat. For this project you'll need 2 1/2-inch wide fabric strips for a log cabin style patchwork placemat. I used leftovers from a quilter's jelly roll. As an alternative you can cut strips from fabric yardage.

Traditionally, log cabin blocks feature light-colored strips on one side of the block and dark colored strips on the opposite side. This gives you many options for block layouts on a quilt. However, since this is just a one block placemat and a scrap happy one at that, I simply used a mix match of fabric pieces. Feel free to create your placemat in any way you choose. Play with your fabric strips before stitching to test the layout.

Tip: I found it helpful to label each cut piece to keep my piecing organized.

The serger makes quick work of stitching the seams and overcasting them at the same time, with the added advantage of the serger seam finishing close to a 1/4-inch, a popular seam allowance for quilting. Note that 1/4-inch seams are not as precise when sewn with the serger. If you want the ultimate in accuracy, feel free to sew the seams on your sewing machine. For yet another option, you could choose to cut strips slightly oversized in length, trimming each one after stitching. Have a rotary cutter, ruler, and a mat on hand for this project.

I should tell you up front I am not a traditional quilter. More of an "eclectic" quilter, I like to find quick ways to quilt and I'm not afraid to bend or break a few rules. When creating this project I opted for the speed and durability the serger provides. Accuracy is not so important for a single block placemat. I serged each seam by barely skimming the raw edge of the fabric to avoid altering the size of the piece. If need be, you can ease or slightly stretch pieces to fit. If you end up with extra length at the end of your seam, simply trim and then move on to the next piece. Pressing each piece as you go will result in a more neatly finished project. You could also finger press or press with a rolling tool or wooden iron as you stitch.

Using a fusible fleece meant that quilting the layers was left as an option, not a necessity. In the end, I opted to add some straight stitch quilting around the strips to give it a more quilted look and keep the placemat flat through multiple launderings. I hope you have as much fun creating these placemats as I did!

Machines and supplies featured or recommended in this show:

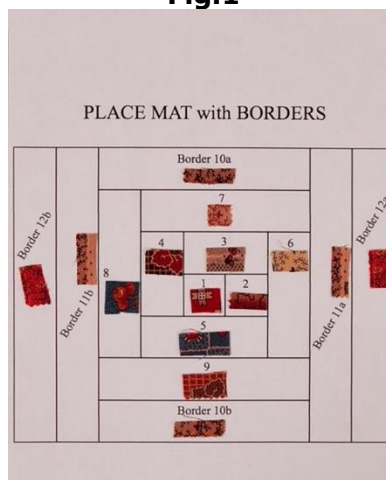
- Four thread serger - I used the Brother Pacesetter PS5234 Serger, threaded with four cones of matching thread.
 - [Brother Stellaire](#) combination sewing and embroidery machine.
 - PDF template to organize fabric strips for serging strips in order. Download and print ISE2105-2_Joanne Banko Placemat.pdf to use as your reference sheet. This page serves as a map, keeping you on track.
 - Fusible web for closing opening.
 - [Pellon 987F](#) fusible fleece for padding placemat.
 - Fabric for backing. Choose a coordinating print or a solid fabric for backing placemat. Note that fleece and backing are cut after patchwork is completed.
-
- Assemble the following pieces in any order or color combination you choose:
 - Piece **(1)** Start with a center block – 2 ½-inches square.
 - Piece **(2)** A second 2 ½-inch square block
 - Piece **(3)** Strip 2 ½-inches X 4 ½-inches
 - Piece **(4)** Strip 2 ½-inches X 4 ½-inches
 - Piece **(5)** Strip 2 ½-inches X 4 ½-inches
 - Piece **(6)** Strip 2 ½-inches X 6 ½-inches
 - Piece **(7)** Strip 2 ½-inches X 8 ½-inches
 - Piece **(8)** Strip 2 ½-inches X 8 ½-inches
 - Piece **(9)** Strip 2 ½-inches X 10 ½-inches
 - Border **(10a)** Strip 2 ½-inches X 10 ½-inches
 - Border **(10b)** Strip 2 ½-inches X 10 ½-inches
 - Border **(11a)** Strip 2 ½-inches X 14 ½-inches
 - Border **(11b)** Strip 2 ½-inches X 14 ½-inches
 - Border **(12a)** Strip 2 ½-inches X 14 ½-inches
 - Border **(12b)** Strip 2 ½-inches X 14 ½-inches

Creating log cabin patchwork placemat with the serger:

Step 1. Set up serger for a four-thread balanced stitch with thread that blends with fabrics. **Tip:** Medium grey thread blends with many fabrics and is a tried a true thread trick used by traditional quilters. Practice your stitch on scraps before starting.

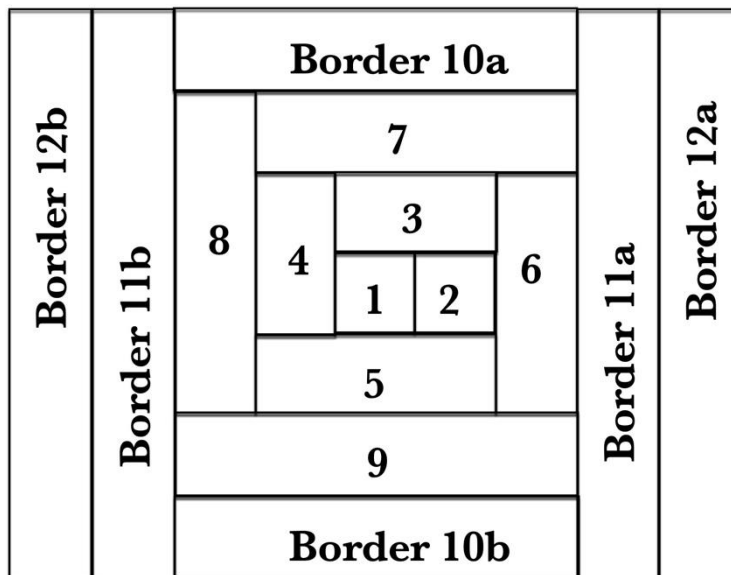
Step 2. To stay on track and make sure to follow the right order for stitching, cut snips of fabric and paste them to reference sheet. See Figure #1.

Fig.1



Step 3. Begin by piecing squares 1 and 2. Continue to add strips 3 through 9, working in a counterclockwise manner. Next, add top and bottom borders 10a & 10b, then side borders, 11a, 11b, 12a, & 12b, following order on Patchwork Layout sheet. See Figure #2.

Fig.2
Patchwork Layout



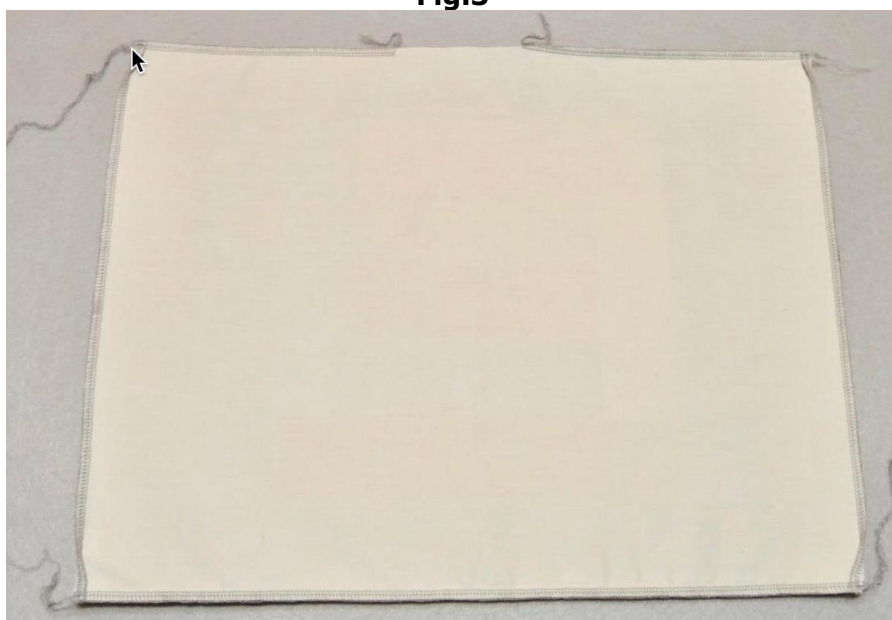
Note that borders can be a mix of fabrics. Use whatever you like! Give patchwork a good press and trim piece if necessary to even it up.

Step 4. Use your finished patchwork piece to cut a matching piece of fusible fleece, and a matching piece of backing. Next, 1/8-inch off one long and one short side of backing piece, making the backing piece slightly smaller than the finished patchwork piece. Fuse fleece to entire wrong side of patchwork.

Tip: Pressing with steam and pressure will achieve a good bond between fabric and fleece. This also flattens fleece a little, making it ideal for placemats.

Step 5. Place backing and patchwork right sides together. Serge short edges, then long edges, folding the corners and leaving an opening on one side for turning. See Figure #3.

Fig.3



Step 6. Turn right side out and press, pressing open edges inside so they're even. See Figure #4.

Fig.4

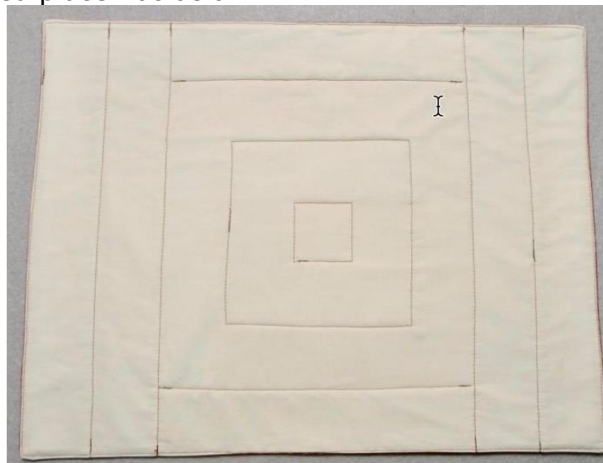


Close opening with fusible webbing or hand stitches. Option: Topstitch outer edge, closing opening in the process. See Figure #5.

Fig.5



Quilt finished placemat if you like. In the end, I chose to do simple stitching close to the seams. See example of quilting on back side of finished placemat below:



You are finished! Enjoy!

©Joanne Banko 2024
www.letsgosew.com