



Brought to you by Joanne Banko  
[www.letsgo sew.com](http://www.letsgo sew.com)

### **Five Favorite Ways to Finish a Fleece Blanket**



*Ahhhh, the comfort of fleece. Aside from a traditional quilt, I would venture to guess there are more blankets made from fleece than anything else. This tip sheet includes ideas for five ways to finish off your fleece blanket, including a link to a tutorial for an easy way to sew a satin binding for a luxurious finishing touch.*

The monogrammed blanket sample you see above was originally featured in Volume 102 of Designs in Machine Embroidery magazine. The blanket is made from [Polartec Classic 200](#) double velour fleece from [Mill Yardage](#)

***Tip: Although good quality fleece looks good on each side of the fabric. Fleece does have a right and a wrong side. Pull along selvedge edge and you'll notice that fleece rolls to the right side.***

You'll find a variety of resources for fleece fabrics on [letsgo sew.com](http://letsgo sew.com). [CLICK HERE](#) to download a free tip sheet with general tips for working with fleece fabric. Are you ready to make a blanket? Cut your fleece to size and add embroidery if desired. **Tip:** I like to add embroidery on a separate piece of fleece and add it as an applique on the blanket. Finish raw edges of your fleece using one of the ideas presented below:

- **Bound Edges:** I used [Wrights Extra Wide Double Fold 1/2-inch Fleece Binding](#) for the pink and white blanket shown above. You'll find this trim in the section with Wrights bias tape products, to my knowledge it is only available in black and white. Rounding

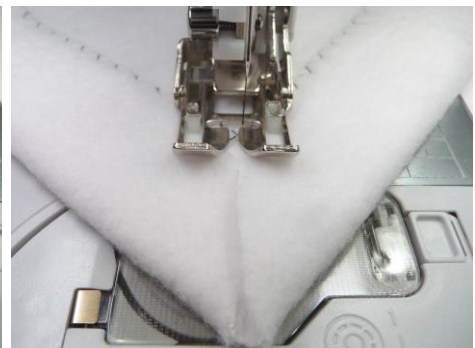
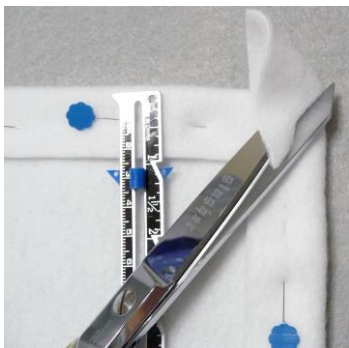
off each blanket corner makes it much easier to attach this type of narrow binding. Note that this type of binding is wider on one side. Set up your machine for sewing with a standard [closed toe walking foot](#) or a [digital dual feed foot](#) if you have one available. Here's how I apply the binding: Open up binding and sew wider side to the backside of the blanket. I used the Sew Straight™ Laser Guide to help me sew evenly and precisely along the seam line. To finish, turn binding to top side and stitch along the folded edge using a narrow zigzag or a blanket stitch.



**Note:** If you're comfortable with making your own binding you could cut 2-inch wide strips of matching or coordinating fleece (cut on the lengthwise grain of fabric) and attach using a method similar to steps shown above.

- **Pinked Edges:** Since fleece does not ravel you can finish fleece *really, really quick* by evenly cutting the edges with a rotary cutter pinking blade, rounding off the corners for a neat finish. This finish is fine for a quick baby blanket or a blanket that is more for utilitarian use and does not need a fancy finish.
- **Hemmed Edges:** Turn 1-inch of fleece to the wrong side and hem using a zigzag stitch with a width and length of 3.5. Miter the corners by trimming excess fleece and butting the raw edges together at the pointed end. Zigzag from end to end on each of the mitered corners to finish. For best results, stitch with the [closed toe walking foot](#) or a [digital dual feed foot](#). See steps below:

**Note:** Sample below was stitched with contrast thread used for better visibility.



- **Serge finished Edges:** Set up your serger for a three-thread wide stitch using standard serger thread in the needle and a yarn type thread in both the upper and lower looper. Lengthen the stitch slightly and test on scraps until you have a balanced stitch. Finish all edges by rounding off the corners and stitching continuously around the entire blanket, barely skimming the raw edge. Overlap stitches slightly at the spot where they join, taking care that you don't cut threads that are already stitched. Bury the thread tails and treat with a light dose of seam sealant if desired. **Note:** *Availability of yarn type threads may change. Check with your local sewing machine shop or do an internet search for availability. Below are a couple possible options:*

*YLI Monet Yarn* is a Wool/Acrylic yarn on a cone that works well for use in the loopers of the serger.



*"Woolie" type textured serger threads known such as YLI Woolly Nylon, and Superior Threads Polyarn is also an option. However, be aware that blankets that get a lot of use may snag at the edges when finished with this thread.*

- **Satin Trimmed Edges:** Purchase Wrights Single fold 2-inch wide polyester satin Blanket Binding. Piece if necessary, to cover all edges of your blanket. You will need several extra inches for mitering corners and finishing the last seam. One 4 ¾ yard package will bind a blanket measuring 30-inches wide X 4-inches long. This fifth way to finish fleece happens to be one of my favorites. I featured this method on It's Sew Easy TV show 1809-1. You can watch this show [HERE](#) on my website. Along with the video, you'll find a link to download a free, detailed tutorial showing all the steps, complete with photographs for attaching satin binding and mitering all four corners on a blanket.

I hope you enjoy making your own blankets using one or more of these techniques!